

Learning Communities

“Active learning in communities of students and teachers”

What's A Learning Community?

A learning community is a pair or group of classes that are linked and enroll a single group of students. Instructors teach their own classes, but plan their courses together to structure learning experiences that build community among students and between students and teachers.

For additional information call: 334-4822 ext. 2360.

Why Enroll in a Learning Community?

- Learning communities increase student engagement and participation since **the same students are involved in both classes**, often in the same room in back-to-back classes
- Learning communities offer the opportunity to **apply learning concepts to both subjects**, allowing students to address topics from more than one perspective
- Students benefit from **more interaction with instructors**
- Some assignments in learning communities overlap and may be credited toward both classes, therefore reducing the overall number of assignments required if taken in individual classes.
- Learning communities focus on understanding how all the skills students are learning fit together

Advising Information for Spring 2010

- **Students must register for *all* linked courses in the community and must remain enrolled in *all* of the courses in a linked community. Students cannot drop one course and stay enrolled in the other(s)**
- **Pre-requisites / program restrictions are enforced; please check before scheduling**
- **Outside activities may be required for these classes; collaborative learning is encouraged and required for most communities**
- **Class sizes are specifically limited; no overrides for enrollment. Students wanting to join a full learning community must see both instructors during drop/add period.**

JOIN A COMMUNITY THIS Spring!

Transitions Learning Community



Designed for students who are making the transition from RED 090 to college-level courses in Psychology and English. These students will improve their study skills through ACA 118, College Study Skills, while also taking PSY 150, General Psychology and ENG 111, Expository Writing and ENG 111A, Expository Writing Lab. Study skills assignments will be linked to material covered in both classes. Especially good for students unsure of their writing abilities and those returning to school after some time away

*Pre-requisite: Students must have taken and completed the **RED 090** course prior to enrolling in the course.*

Restricted enrollment: contact George Ritchie, #2527 for enrollment.

ACA 118-C01	10:30-12:00	Tu, Th	DS 205	Ed Bowling
ENG 111-C01	9:00-10:00	MWF	DS 205	Rita Gress
ENG111A-C01	9:00-10:00	Tu, Th	DS 205	Rita Gress
PSY 150-C01	11:00-12:00	MWF	DS 205	George Ritchie



Web-Enhanced RED 090 and ENG 090: Using Technology

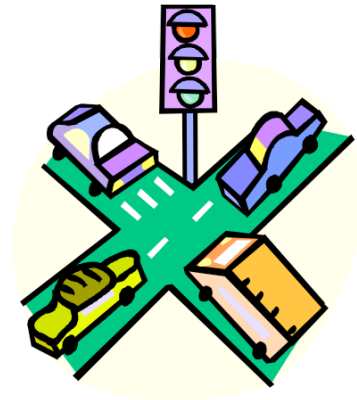
Students in this learning community will receive extra support in using technology for on-line learning in hybrid ENG 090 and RED 090 courses. Ideal for independent, self-motivated learners from any curriculum who want the best of traditional and online instruction.

Prerequisites: Placement test scores of 45 in Writing, 65 in Reading, or completion of ENG 080 and RED 080.

Note: Students must have regular and reliable access to a computer and the Internet.

ENG 090- CW1	Composition Strategies	9:00-10:00	MWF	JWH 114
ENG 090A-CW1	Comp. Strategies Lab	2 hour lab	ON LINE	Jim Simpson

RED090- CW1	Improved College Reading	10:00-11:00	MWF	JWH 114
		2 hour lab	ON LINE	Ed Bowling



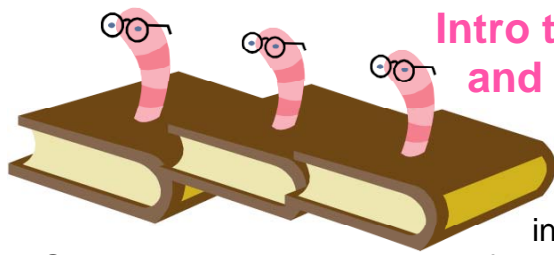
The Intersection of Reading and Writing: Writing About What You Read

Students often do not see the connection between Developmental Reading and Developmental Writing skills. This class specifically addresses that connection by providing students the opportunity in ENG 090/90A to apply their writing skills to the topics which they are reading for RED 090.

*Prerequisites: Reading Placement Score of 65-80 or RED 080 completion
Writing Placement Score of 45-69 or ENG 080 completion*

RED 090 C02	Improved College Reading	9:00-10:00	M-F	JWH 116
				Ed Bowling

ENG 090 C02	Composition Strategies	10:00-11:00	MWF	JWH 116
ENG 090A C02	Comp. Strategies Lab	10:00-11:00	Tu, Th	JWH 116
				Jim Simpson



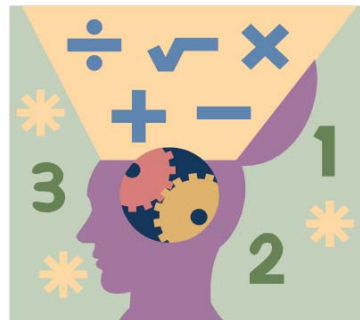
Intro to College Reading and Writing Foundations

New students who bond together in learning communities tend to perform better – and are more involved in their learning at the same time. The RED 080-ENG 080 community hopes to form a community of new students who can progress together over the year as they move through the curriculum by forming bonds in the fall in their first developmental classes.

Recommended for new students entering at RED 080 and ENG 080 level (placement test scores of 54 and 20 respectively), or for continuing students who would like to participate as members of a community of learners.

RED 080 C03L	Intro to College Reading	8-9	M-F	HT 227	Dawn White
ENG 080 C03L	Writing Foundations	9-10	M-F	HT 227	Olivia Hall

Problem-Solving Through Study Skills



Introductory Algebra (MAT 070) can be a frustrating experience for students with a fear of math, or who are taking Algebra for the first time. Pairing Introductory Algebra with College Study Skills in a learning community gives students an edge in learning to solve algebraic problems while building confidence at the same time.

Prerequisite: RED 070 or placement into RED 080 and MAT 060 or placement into MAT 070

ACA 118 C04	College Study Skills	9:00-10:00	MWF	JWH 214
				Noel Allen
MAT 070 C04	Introductory Algebra	10:00-11:00	M-F	JWH 214
				Sue Brown



Rockin' and Writin'

-For students who love rock and roll enough to write about it..

This engaging learning community connects the writing assignments of ENG 111 while engaging the sensory aspects of rock and roll music at the same time. Students will find their interests stimulated by the exciting history of rock and roll music in MUS 210, which will provide an interesting background for the writing assignments in ENG 111.

Recommended for students from all programs which require ENG 111 and a Humanities/Fine Art elective. This includes **College Transfer** students, who are required to have ENG 111 and two Humanities/Fine Arts electives, **pre-health program students**, who are required to have ENG 111 and one Humanities/Fine Arts elective, or **any technical degree** student (all require one Fine Arts/Humanities elective and ENG 111.)

Prerequisite: English Placement Score of 70 or above, or completion of RED 090

MUS 210 C05
ENG 111 C05

History of Rock and Roll 11-12
Expository Writing 12-1

MWF BH 12 Wheeler
MWF BH 12 Fried



Prepare for the Real World through Literature and Sociology

Explore the differences in our society's culture, class, and race through literature and the study of sociology. Readings will relate to topics discussed in sociology class, and students will work collaboratively on projects in both classes.

Recommended for any associate degree which requires humanity and social science electives. Especially helpful for A.A. General Studies, Pre-Sociology, or Pre-Social Work majors.

Pre-requisite: ENG 111, Expository Writing

ENG 131-C06 Introduction to Literature 9:00-10:00
SOC 210-C06 Introduction to Sociology 10:00-11:00

MWF DH 306 JoAnn Buck
MWF DH 306 Kim Churchill



Exploring Language through Words and Study Skills

Students can practice and improve their English writing skills through the journaling assignments in the College Study Skills class. Topics and assignments will be connected and focus on both cognitive and affective learning.

Prerequisites: *Writing Placement Score of 45-69 or ENG 080 completion*

ENG 090 C07	Composition Strategies	10:00-11:00	MWF	HT 227 Dee Siler
ENG 090A C07	Comp. Strategies Lab	10:00-11:00	Tu, Th	HT 227 Dee Siler
ACA 118 C07	College Study Skills	11:00-12:00	MWF	HT 227 TBD



Research and American Cuisine

Required for Culinary Arts students, who will use the ENG 114 Course to create their capstone projects, which will encompass their knowledge of culinary skills gained throughout the curriculum.

Restricted enrollment: Students must be officially accepted and enrolled in the Culinary program. Prerequisites: ENG 111, Expository Writing, and CUL 140, 160, 250 and 270.

ENG 114-C09	Professional Research and Reporting	8:30-10:00	Tu, Th	HM 235
				JoAnn Buck
CUL 180-	American Cuisine			any section (01, 02 or 80)
				See Fall Schedule for times
				Al Romano