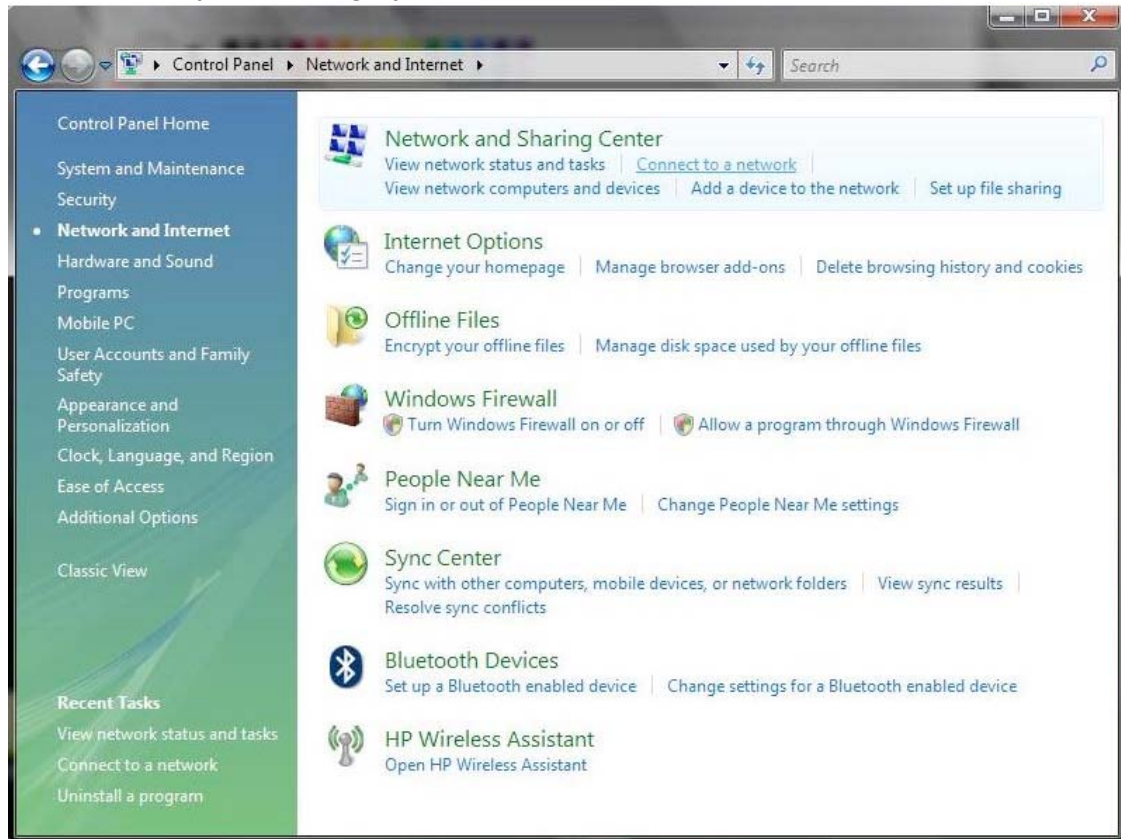


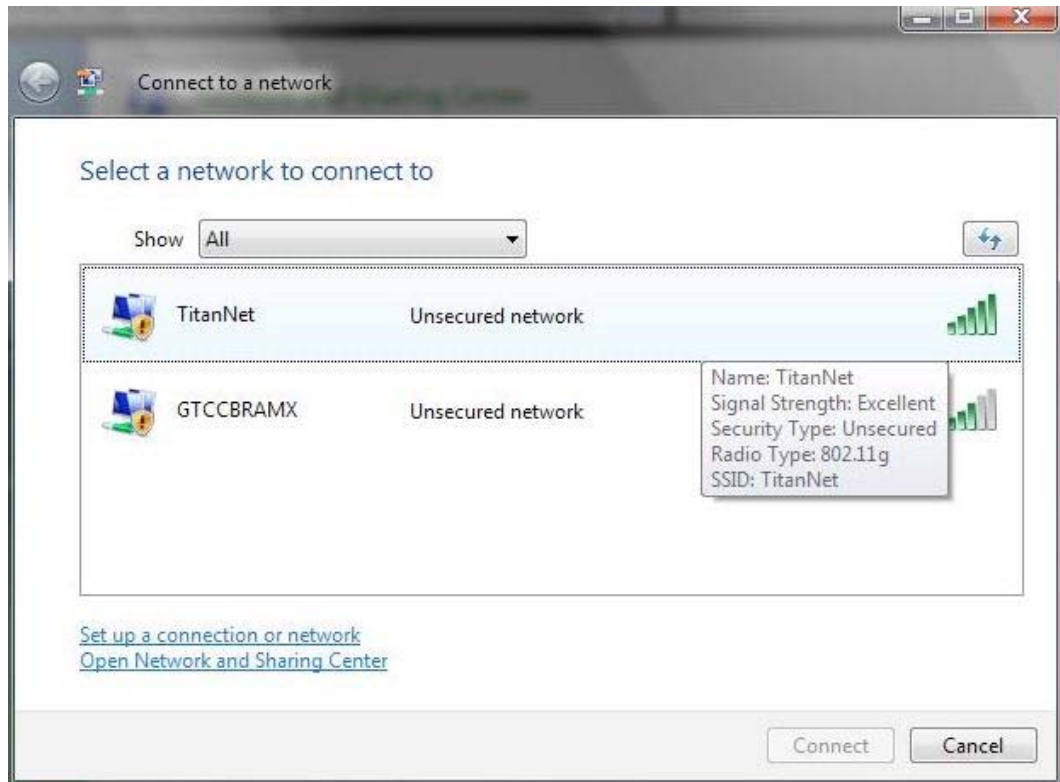
This write up assumes that you are using Windows to manage your wireless networks and that you are using Category view for Control Panel. If you are using third party software to manage your wireless card you will need to refer to the documentation provided by the manufacturer.

1. Make sure that your wireless card is enabled. This varies by manufacturer and will need to refer your documentation if you are unsure on how to check this.
2. From the Start menu, select Settings -> Control Panel -> Network and Internet -> Connect to a network if you use Category View on the Control Panel.

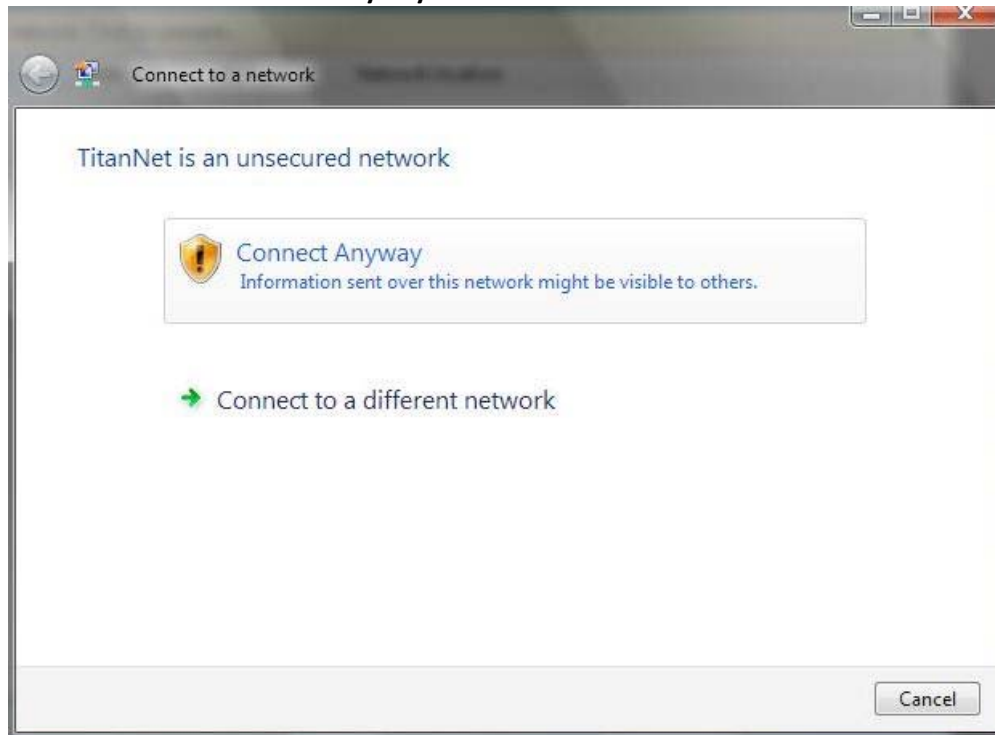


3. Select TitanNet and click Connect. If TitanNet is not shown then you could be out of range, the Access Point may be down, or your computer could be experiencing technical

difficulties.



4. You may get a warning box stating that you are connecting to the unsecured network "TitanNet". Click Connect Anyway.



5. The next screen should say **Successfully connected to TitanNet**. You can check the **Save this network** and **Start this connection automatically** if you would like to connect automatically when you within range of TitanNet.

