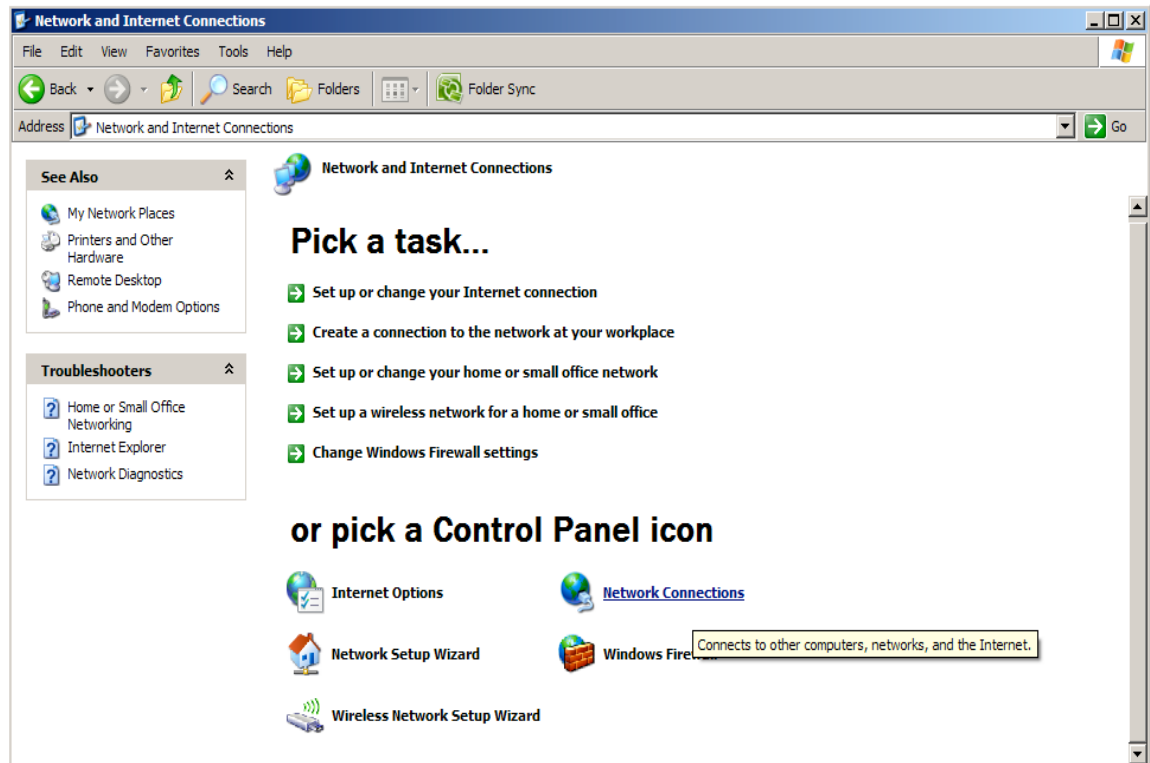
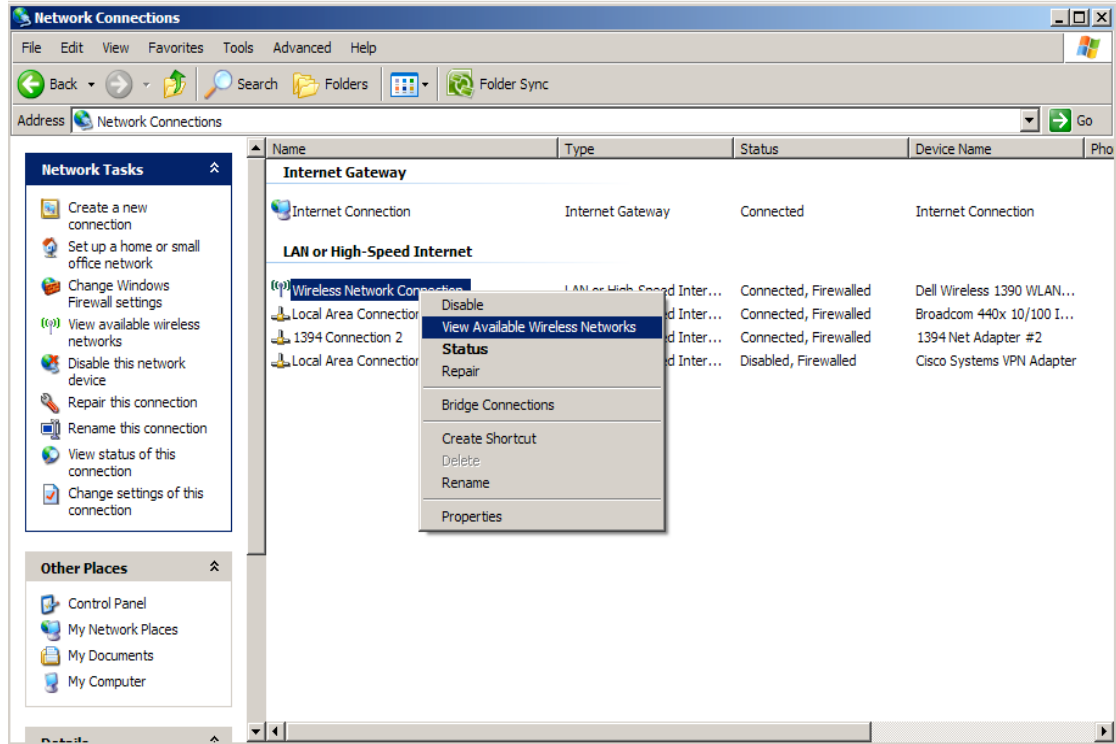


This write up assumes that you are using Windows to manage your wireless networks and that you are using Category view for Control Panel. If you are using third party software to manage your wireless card you will need to refer to the documentation provided by the manufacturer.

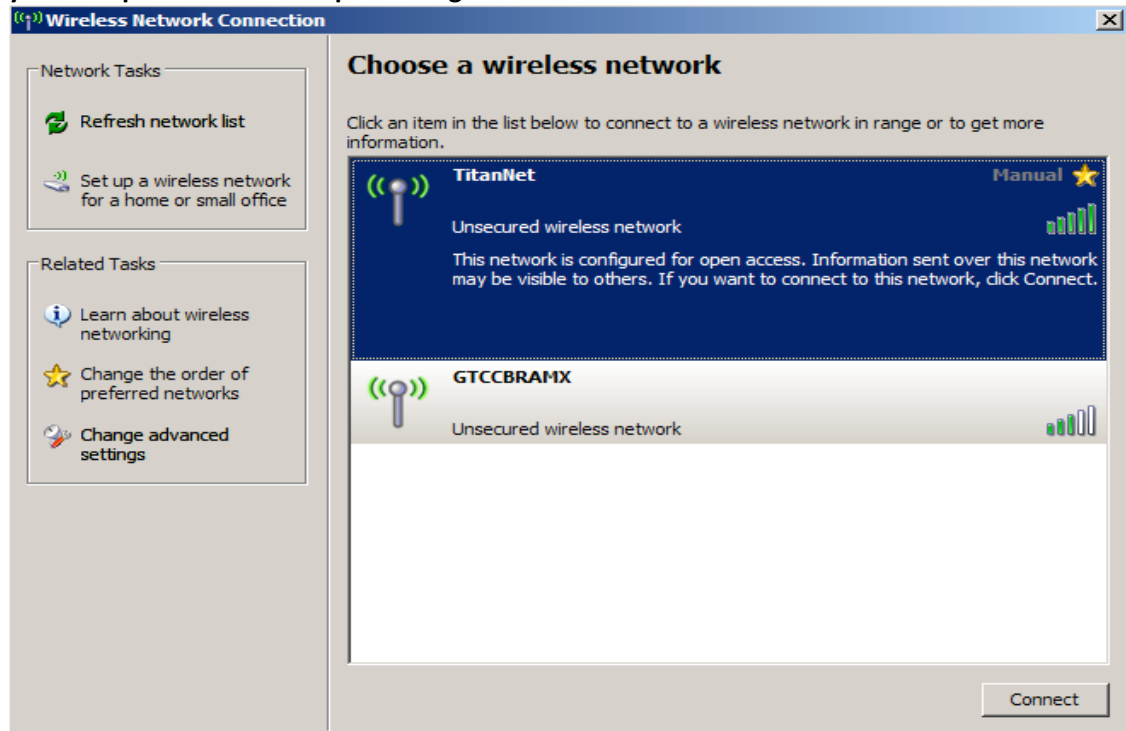
1. Make sure that your wireless card is enabled. This varies by manufacturer and will need to refer your documentation if you are unsure on how to check this.
2. From the Start menu, select Settings -> Control Panel -> Network and Internet Connections -> Network Connections if you use Category View on the Control Panel.



3. Right click on the Wireless Network Connection and choose View Available Wireless Networks.



4. Select TitanNet and click Connect. You may have to click Refresh network list. If TitanNet is not shown then you could be out of range, the Access Point may be down, or your computer could be experiencing technical difficulties.



5. You may get a warning box stating that you are connecting to the unsecured network "TitanNet". Click Connect Anyway.
6. The screen will come back to the Wireless Network Connection window. You should see Connected in the TitanNet dialog box. Exit out of all windows. You are now connected to TitanNet. You can exit out of all windows that you have opened.

