

Eduroam Windows 7 Manual Setup Instructions

1. Navigate to the “Network and Sharing Center.” Below shows how to do so from the taskbar.



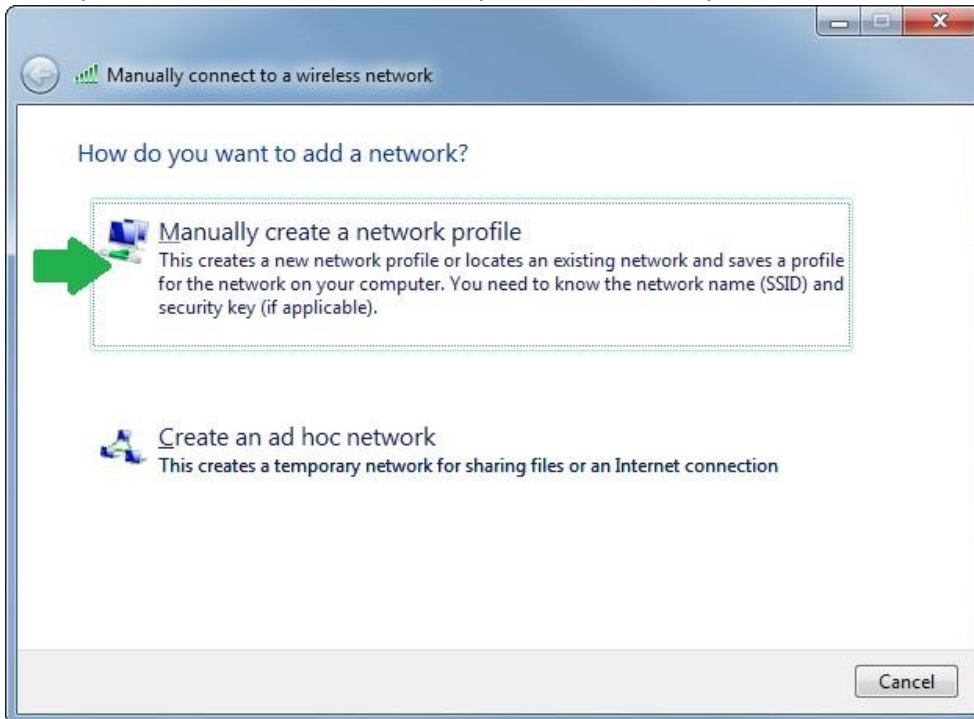
2. Click “Manage wireless networks” in the Network and Sharing Center.



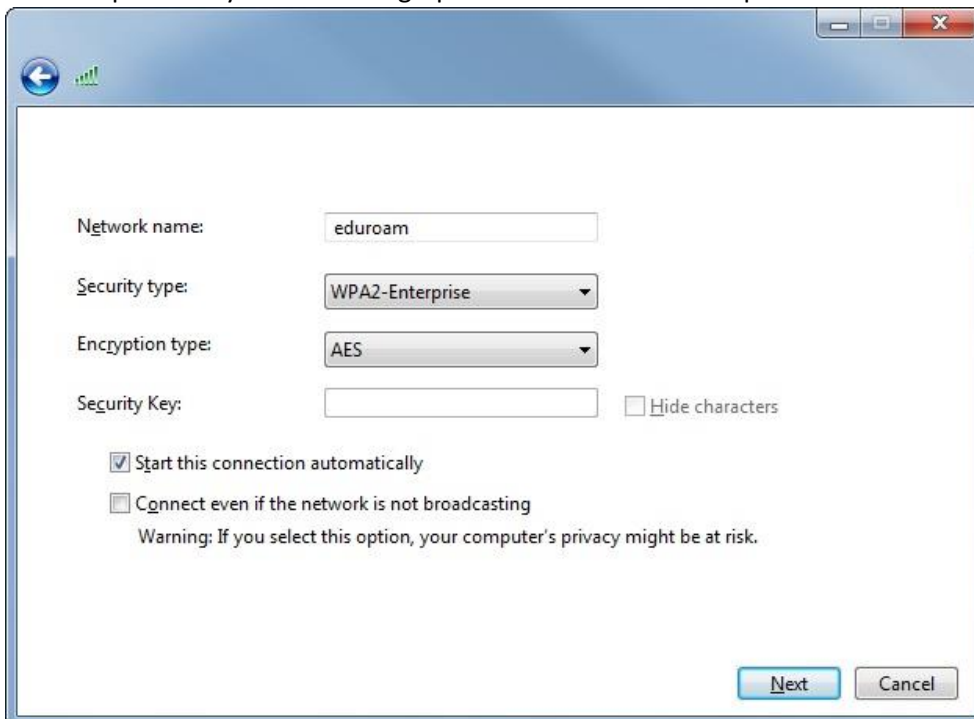
3. If TitanNet shows in this list you may want to remove it so eduroam is more likely to connect first. Click “Add.”



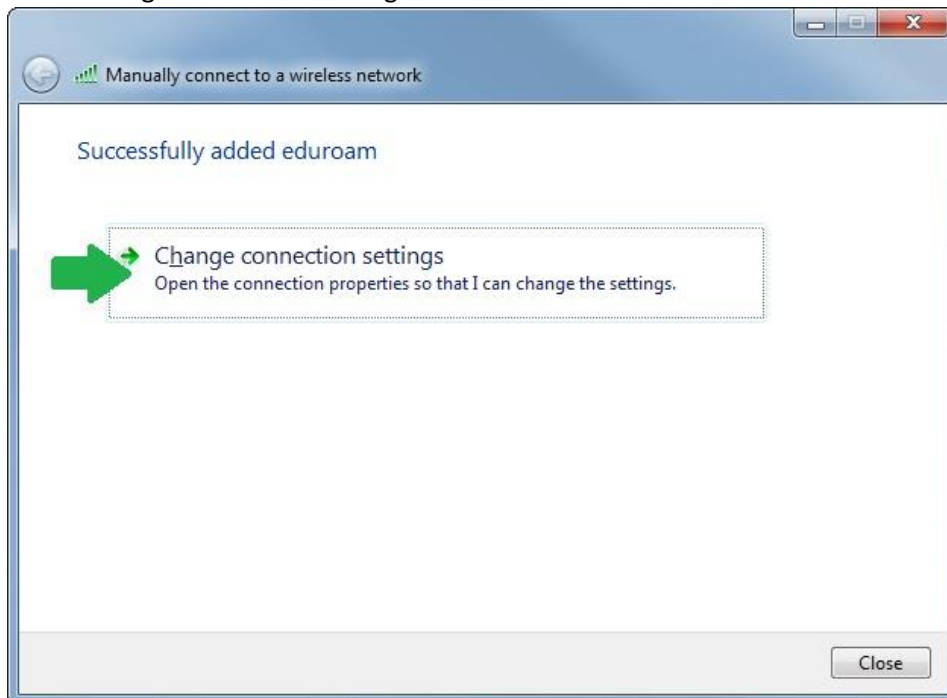
4. A setup wizard will start. Click “Manually create a network profile.”



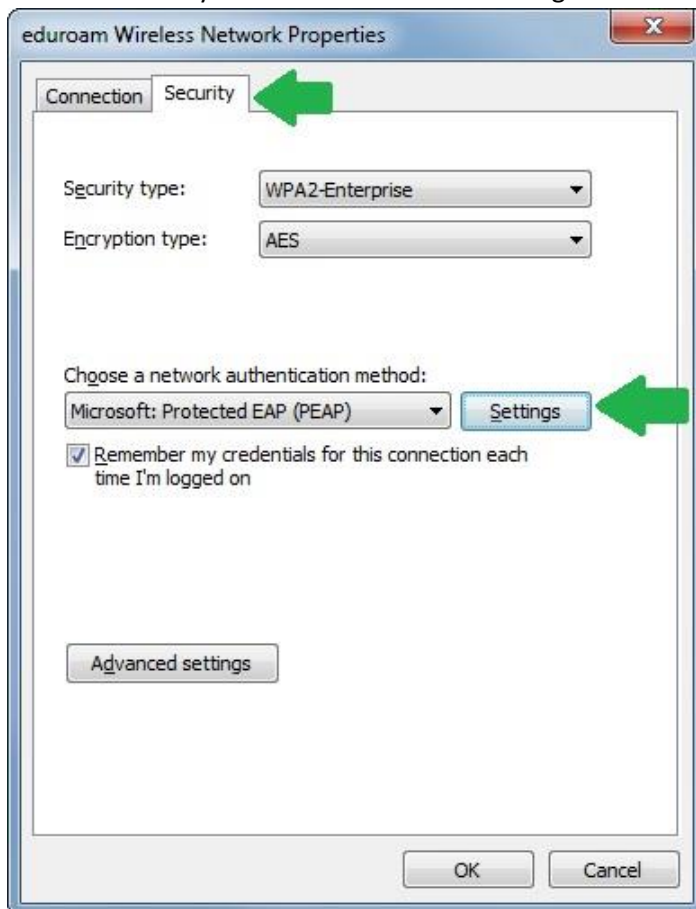
5. Set the options as you see in the graphic below. After all the options are selected click “Next.”



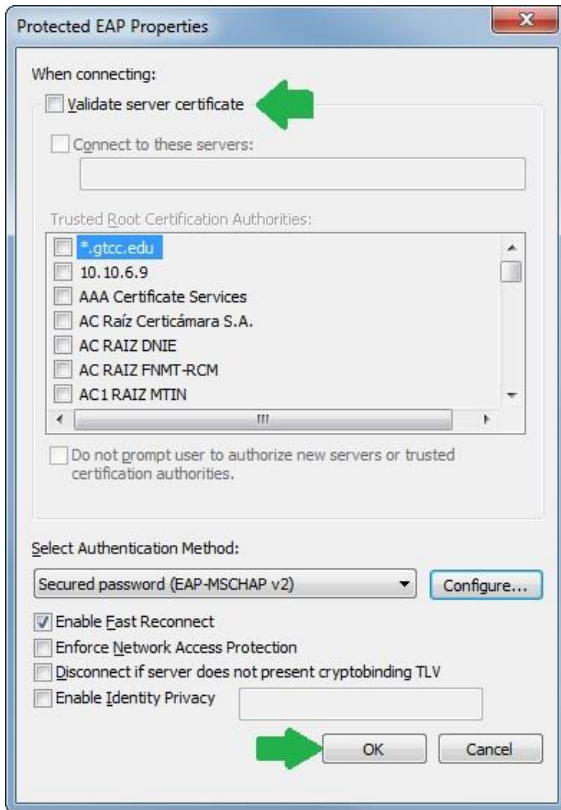
6. Click "Change connection settings."



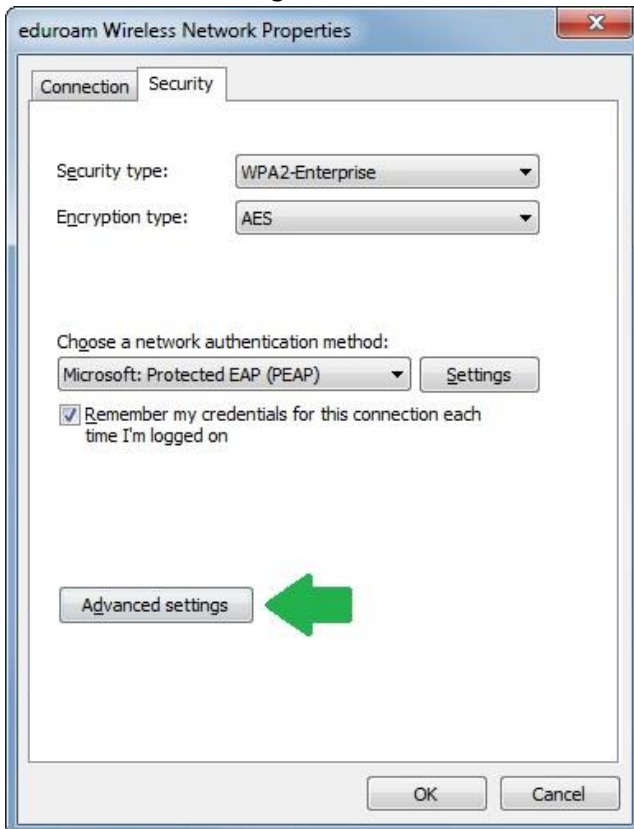
7. Click the Security tab and then click the Settings.



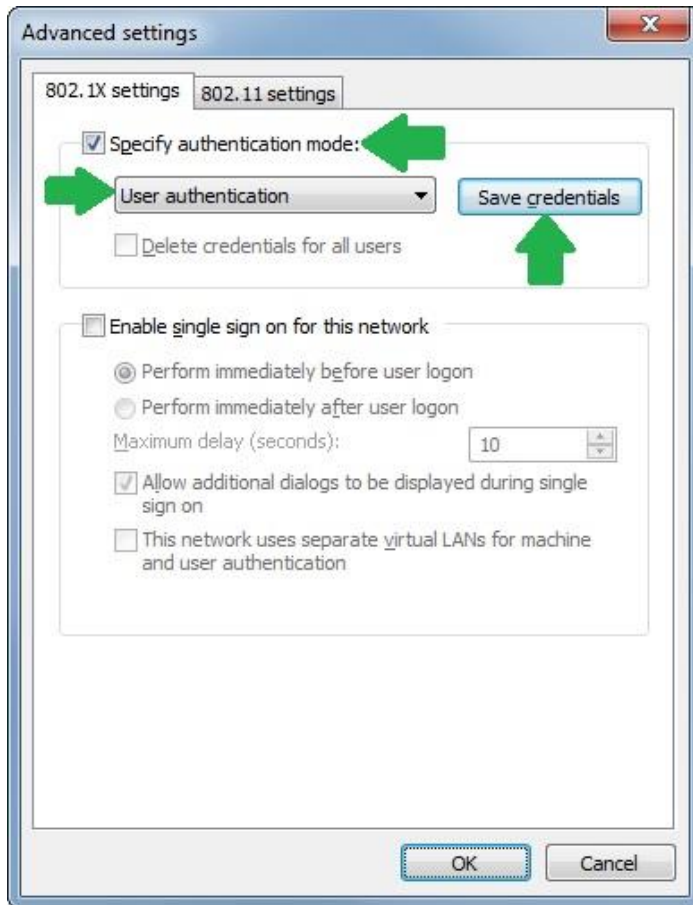
8. Uncheck “Validate server certificate” and click the OK.



9. Click “Advanced settings.”



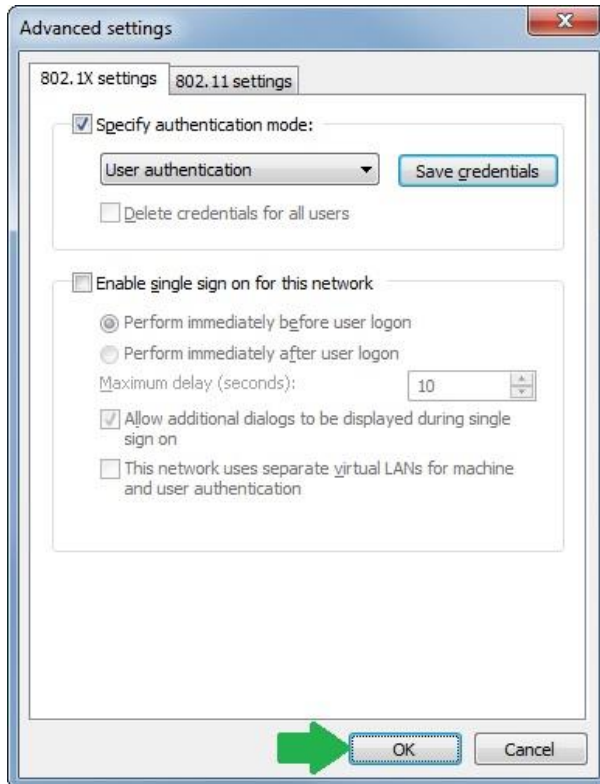
10. Check “Specify authentication mode:” then select “User authentication” from the dropdown menu. Click “Save credentials.”



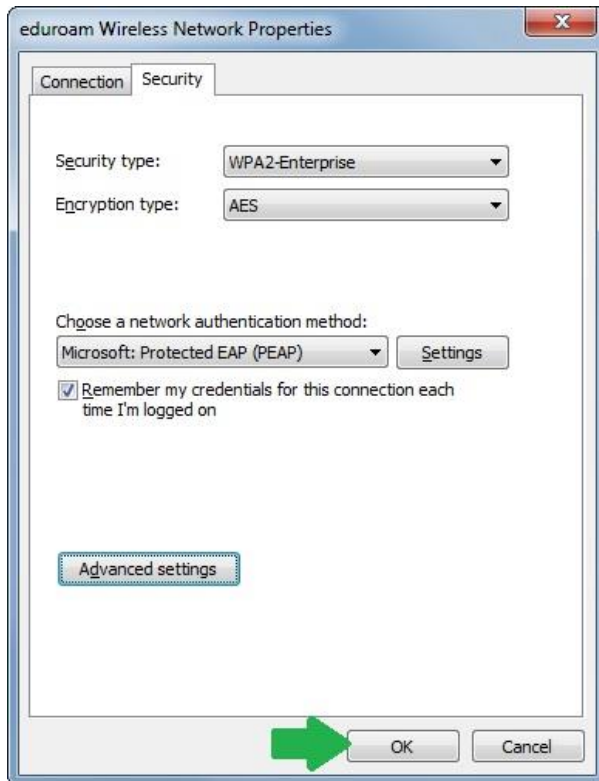
11. Type your username and password into the fields. Your username must have @gtcc.edu specified. Click OK.



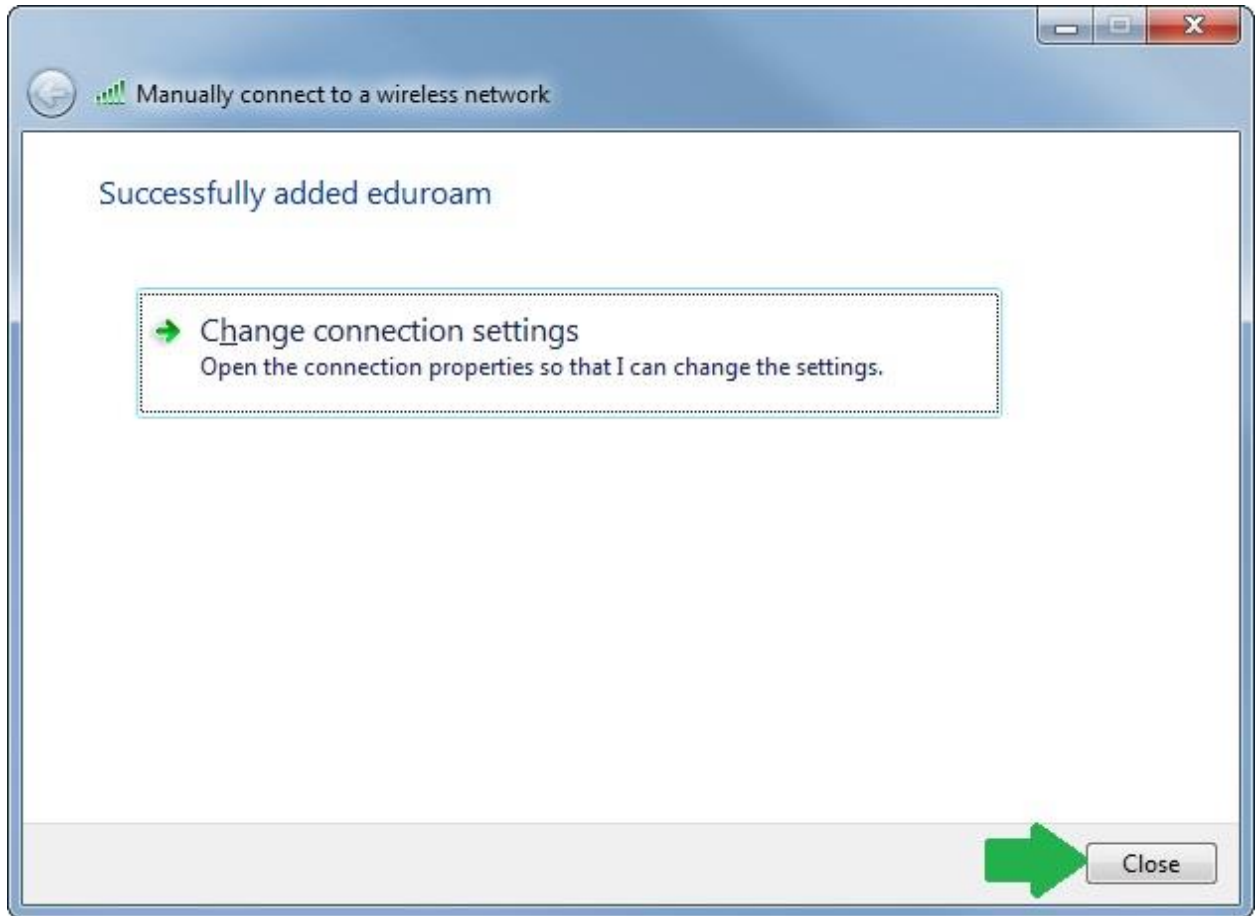
12. Click OK.



13. Click OK.



14. Click Close.



15. Setup complete. If connection fails, you may have put incorrect password on step 11. Unfortunately, if this happens Windows will automatically remove the network from your list requiring you to manually add the settings over again.